



**WE POWER THE
ASCENT OF
TECHNOLOGY**

Company Profile

ID Tech Solutions Private Limited, an ISO 9001 certified company formerly known as I D Solutions was started in October 2002 to cater to the needs of Plastic Cards and Smart Cards in the Indian subcontinent. Today, we are global leaders in the "next generation" of Smart Cards, Plastic Cards, RFID Tags, Card Printers, Handheld Devices, Time Recorders, Access Control Systems and IT and software related solutions.

ID Tech Solutions (P) Ltd. defines, designs and delivers technology-enabled solutions. With in depth understanding of the Indian markets we emerge as leaders through quality and product innovation. This industry leading comprehensive, approach gives us the ability to respond quickly to customer needs and design innovative solutions that meet those needs efficiently and cost effectively.

We take pride in building strategic long-term client relationships.

ID Tech Solutions (P) Ltd. has a national footprint with Head Quarters in New Delhi and service centers across India.

Company Objectives

“ To Provide top quality products & services which maximise clients results. To conduct our business according to the highest levels of ethics. To develops the career and skills of our employees so that they can fulfill their objectives, and maximise their contribution to the success of the company.

”



Our Team

SAURAV KHEMANI - Director

Mr. Khemani has over 9 years of experience in Sales and Marketing. He is adept at training, motivating and managing Personnel. A graduate from Symbiosis College, Pune and alumni of Bishop Cottons School, Bangalore, Mr. Khemani is one of the founder members of company and took over as Director of ID Tech Solutions (P) Ltd.

HITESH CHAWLA - Director

Mr. Chawla is a BE graduate and alumni of IIT-Delhi. He has been instrumental in building up the technical and software team of the company. A technocrat and a man of broad vision, he has spearheaded company's entry into number of new verticals and partnerships. He heads the IT division for ID Tech Solutions (P) Ltd.

RAJNI KHEMANI - Director

Mrs. Rajni is an MBA and alumni of IP College for Women, Delhi University; she has been a part of the company since inception. Joined as Marketing Manager, she now is Director and heads the procurement, manufacturing & channel development of the company.

VIJAY KUMAR

Mr. Vijay joined ID Tech Solutions (P) Ltd. in 2006 and in a span of five years progressed to the position of Chief Financial Officer. He is well respected amongst colleagues & customers for his financial acumen and management skills.

Our Product range

Plastic Cards

Smart Cards

RFID

Biometrics

Hand Held Devices

Card Printers

Smart Card Reader

Time Attendance & Access Control Applications



Our Solutions

Loyalty Application

Gift card Application

E purse Application

Library Automation

Campus Management

Livestock Tracking

HR & Payroll

Inventory Management

Event Management

Plastic Cards



BLANK CARDS

PRE PRINTED CARDS

LOYALTY/DISCOUNT CARDS

GIFT CARDS

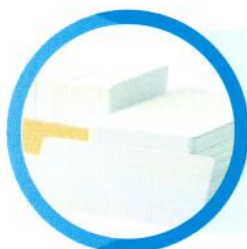
LUGGAGE TAGS

TRANSPARENT CARDS

MAGNETIC STRIPE CARDS

BARCODE CARDS

We offer our customers the most comprehensive range of services in the industry from designing , manufacturing, personalization packaging to mail out & dispatching.



Blank Cards

Our Blank PVC plastic cards are the highest quality, ultra fine cards. We guarantee that all our blank cards will print in any regular card printer they are put into. Also we offer a quick delivery time.



Pre Printed Cards

Pre-Printed cards are the most widely used. Printed on full spectrum of colors on Heidelberg Printing machines, our cards provide the most beautiful and accurate reproduction of the artwork with a mirror like finish and premium look and feel.



Loyalty/Discount Cards

It is a time tested and an effective marketing tool that makes the customer feel important. We are making loyalty cards for the top brands in India and we have earned their respect with our offerings.



Gift Cards

Our Gift Cards are extremely popular with big brands because of the quality. We have done Gift Card applications for large local and Multinational companies. They have become the next big thing during the holiday seasons.



Luggage/Bag Tags

Our Luggage tags have become a favourite with various airlines and transport companies because of the superior quality and fine printing.



Transparent Cards

Our unique transparent cards and translucent cards gives you an edge over other regular run-of-the-mill plastic cards with their unique and attractive appearance and help our clients stand out from their competitors. Its new and innovative.



Magnetic Stripe Cards











We offer a full lineup of magnetic stripe cards with options that range from full custom printing to personalization. Cards are offered with standard tracks 1, 2, and 3 with encoding option. Varieties of custom cards are available in high quality PVC, with mirror, matte, or combination finishes. Magnetic stripes are available in silver, gold, blue, red, and holomag styles.



Barcode Cards

We offer a comprehensive range of barcoded cards, based on our clients requirement that are used to store data for both identification and tracking and payment purposes. Its a new, innovative and a cost effective method.

How are our cards different ?

	PVC CARDS by ID Tech	CARDS PRINTED by our Competitor's
 Quality Standard	Our cards meet all the ISO, ANSI, Credit cards and ABA standards.	The cards printed on synthetic plastic sheets do not meet the ISO, ANSI, Credit Cards and ABA standards.
 Edges	Has clean, precise optically die cut edges and rounded corners.	Has rough, burred, steel rule die cut edges and corners .
 Finish	Our cards have mirror like finish. They are manufactured in a completely dust free environment to avoid scratches and dents	Cards are full of scratches and completely uneven surface.
 Shape	Will pop back into shape if bent or folded.	Will permanently deform/crease if bent or folded.
 Printing	Our cards are four color litho printed on Heidelberg Machines in full spectrum of color. The printing provides accurate, precise, detailed, natural brilliant reproduction of your artwork.	Our competitors use inkjet printers, thermal printers or color photo copiers which result in dull printing and the cards are susceptible to fading.
 Bonding	PVC cards are fused together using very high temperatures i.e., 150 degree Celsius as a result the layers bond together to make one complete layer. The Vinyl over laminate film is scuff and scratch resistant.	The sheets are printed on laser printers as a result the colours form a non permeable layer and the cards are laminated using soft adhesive lamination process because of which the lamination is only temporary and the darker the colour the sooner the layers will come off.
 Raw Material	Our cards are made with the highest quality of PVC which is the only substrate used for secure card applications.	The raw material is not up to the mark resulting in poor quality of card and finish.
 Quality Control	We have quality control and checks at various stages starting from:-Incoming raw material QC , Printing QC, Lamination QC, Punching QC, Personalization QC & Packaging QC.	No quality control process.
 Packaging	Each box is over wrapped with shrink wrap to avoid dust and dirt. The quantity and serial number is clearly defined on each box.	Cards are poorly packed and the card count is not proper.
 Turn Around Time	Our facility has a capacity to manufacture a million cards every day. Hence we have a quick turn around time for large orders.	Most card manufacturers do not have a capacity to manufacture more than 5000 cards a day.

Smart Cards



CONTACT CARDS

CONTACTLESS CARDS

HYBRID CARDS

Contact Cards

Contact Smart Cards are the size of a credit card. A metallic chip is embedded inside the plastic card with a microprocessor and memory. They are widely used in network security access control, e commerce, electronic cash and as health cards in network security, access control, e-commerce, electronic cash and as health card. The chip is visible on the surface of the card.

Chip Available: Siemens series, SLE4442/5542, SLE4428/5528, Fudan series, Atmel series, ISSI series, Philips; Legic; Alien+ Impini.



Contactless Cards

As the name suggests, the contactless cards do not directly come in contact with the reader. These cards have an antenna and chip built in the card. It is not visible on the surface of the card. The antenna and chip of the contactless cards is used to communicate with the card reader for reading and writing data on the card. The working of these cards is based on radio frequency identification technology. These cards are used as parking cards, student identification and electronics passports.

Contactless Cards are classified in 3 parts:

1. Low Frequency: Proximity card(2-10cm) smart card

Chip Available:- Tk4100, EM4102, EM4450, T5577 T5567 Hitag1, HitagS256, HitagS2048, 125KHz HID chip are all 125KHz chip

2. High Frequency: Mid long distance smart card(10-80cm)

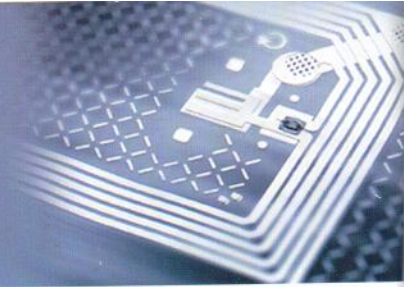
Chips Available : Mifare 1K S50, Mifare ultra light U10, Mifare Desfire, ICODE SLI, ICODE SLI-S, Ti2048, Ti256, INSIDE 2K, Legic mim256, Legic mim2048, JWL872, SHC1108, Fm1208 are all 13.56MHz chip

3. Ultra High Frequency: Mid long distance smart card(80cm-8M)

Chips Available:- UCODE EPC GEN2/UCODE, ALIEN Higg3 GEN2/ Impinj Monza3 GEN2/Impinj Monza4 are all 850-915MHz chip(UHF chip)



RFID



RFID BOOK TAG RFID DVD TAGS RFID GLASS TAGS RFID ISO TAGS
 RFID JEWELLERY TAGS RFID KEY TAGS RFID LAUNDRY TAGS RFID METAL TAGS
 RFID TRANSPARENT TAGS RFID WRIST TAGS SILICON WRIST BANDS RFID ANIMAL TAGS



RFID Book Tags



RFID DVD Tags



RFID Glass Tags



RFID ISO Tags



RFID Jewellery Tags



RFID Key Tags



RFID Laundry Tags



RFID Metal Tags



RFID Transparent Tags



Silicon Wrist Bands



RFID Wrist Bands



RFID Animal Tags

RFID Tags and Labels are offered in different form factors. Depending upon the memory size, the encryption type and the distance across which it has to be read. Some of the most widely used tags are listed below

1. Low Frequency:-Proximity card(2-10cm) smart card

Chips available:- TK4100, EM4100, EM4102, EM4450, T5577 (T5567 updated version), Hitag1, Hitag2, HitagS256, HitagS2048, 125KHz HID chip are all 125KHz chip

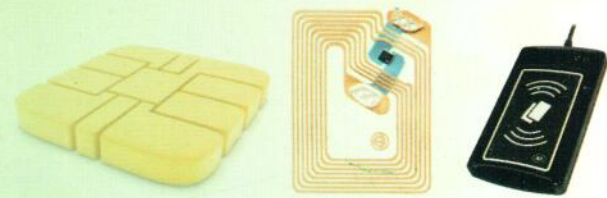
2. High Frequency:-Mid long distance smart card(10-80cm)

Chips available:- Mifare 1K S50, Mifare 4k S70, Mifare ultra light U10, Mifare Desfire, ICODE SLI, ICODE SLI-S, TI2048, Ti256, INSIDE 2K, Legic mim256, Legic mim2048, JWL872, SHC1108, FM1208 are all 13.56MHz chip

3. Ultra High Frequency:-Long distance smart card (80cm-8m)

Chips available:- UCODE EPC GEN2/UCODE HSL/ALIEN Higg3 GEN2/Impinj Monza3 GEN2/Impinj Monza4 are all 860 - 915MHz chip(UHF chip)

SMART CARD READERS



Contact Card Readers

- Supports ISO-7816 Class A, B and C (5V, 3V, 1.8V) cards
- Performs read and write operations on all microprocessor cards with T=0, T=1 protocols
- Supports most of the popular memory card types in the market:



Contactless Card Readers (HF)

- USB PnP or serial RS232 interface
- Read and write functionality
- Built-in antenna for contactless tag access, with card reading distance of up to 50 mm
- Supports major contactless smart cards conforming to ISO 14443 Type A and B
- Built-in anti-collision feature (only 1 card is accessed at any time)



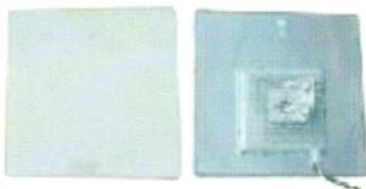
USB READER (UHF) IDT-105

- Support UHF EPC Gen2(ISO18000-6C), ISO18000-6B protocol tags;
- Advanced tag processing algorithm, high identification rate;
- Built-in antenna with effective distance up to 180mm*;
- Low power dissipation design;
- Optional USB interface;



Passive (UHF) Integrated Reader IDT-85

- UHF (865-867MHz) band, equipped with 8dBi antenna
- Support standard RS-232, 10M/100M Ethernet interfaces
- Multi-group I/O ports, controlling the functional mode of the reader/writer
- Order-trigger, set time-trigger suitable for any applications



Passive (UHF) Integrated Reader IDT-88

- Support ISO18000-6B, ISO18000-6C(EPC C1G2) protocol tag;
- 865-867 MHz frequency band;
- FHSS or Fix Frequency transmission;
- RF output power up to 30dbm(adjustable);
- 12dbi antenna optional with effect distance more than 15m*;
- Support auto-running, interactive and trigger-activating work mode;
- Low power dissipation with single +9 DC power supply;
- Support RS232, RS485, Wiegand interface



Active Reader IDT-F528

- Operating Frequency 2.4 - 2.48GHz
- Sensitivity -95dBm
- Communication Interfaces RS-232, 10/100M Ethernet
- Optional Interfaces RS-485, Wiegand 26/34
- Waterproof IP 67

BIOMETRICS

DIGITAL PERSONA

FUTRONIC-FS 80

FUTRONIC-FS 88

GREENBIT DACTYSCAN

SECUGEN HAMSTER IV

SECUGEN HAMSTER PLUS



Digital Persona

- Small form factor Conserves valuable desk space.
- Rugged construction High-quality metal casing
- Rotation invariant Touch it from any direction.
- High-quality optics ensure best image every time.



Futronic-FS 80

Futronic's FS80 USB2.0 Fingerprint Scanner uses advance CMOS sensor technology and precise optical system to deliver high quality fingerprint image.



Futronic-FS 88

FS88 is an enhanced version of FS80 USB2.0 Fingerprint Scanner from Futronic. It was certified by FBI to be compliant with PIV-071006 Image Quality Specification for Single Finger Reader.



Greenbit Dactyscan

This revolutionary product represent a new age in digital fingerprinting. All civil and law enforcement applications requiring the acquisition of the 10-prints will be the fully satisfied by DactyScan84n performance and quality.



Secugen Hamster

SecGen Hansters are the industry's most accurate, rugged and affordable USB fingerprint reader. These high-performance, versatile readers feature advanced optical sensors engineered.



Secugen Hamster Plus

SecGen Hansters are the industry's most accurate, rugged and affordable USB fingerprint reader. These high-performance, versatile readers feature advanced optical sensors engineered.

HAND HELD DEVICES

C5000U

C5000W

PROMAG PCR/MFR-120



C 5000 W HANDHELD RFID TERMINAL

- Rugged Structure IP 64
- Scans RFID Cards LF & HF
- Wi-fi / GPRS / Bluetooth / GPS
- Touch Panel / LED backlit



C 5000 U HAND HELD UHF TERMINAL

- UHF RFID read and write
- 1- and 2-D barcode scanning
- WiFi and GPRS communication
- UHF Reading Distance : 250 CM



PROMAG PCR/MFR-120

- Mini portable battery-powered Mifare UID reader
- LCD and built-in real time clock for data collection applications.

CARD PRINTER

FARGO



DTC1000



DTC4000



DTC4500



HDP5000

DATA CARD PRINTERS



SP 30



SP 75



SD 260



SR 200

TIME ATTENDANCE & ACCESS CONTROL

ID 702

ID Clock 990

ID Face 220

ID SC 405

ID T4 BIO

ID 79

ID X990

SF 3000 PFC MI



ID 702

- User Capacity:1500
- Provides foolproof security
- Support 360-degree rotation identification
- Transaction Storage :50000
- Strong 600 DPI Scanner
- Best Access Control in industry



ID Clock 990

- User Capacity:1500
- Inbuild Camera with Access Control Feature
- 3.5" TFT Display
- Transaction Storage :50000
- 8 Customizable Keys



ID Face 220

- Face templates: 700
- 4.3" TFT Touch-Screen
- 6 Customizable Function Keys
- Fingerprints templates: 5000
- Infra-red camera
- Asmirable Body



ID SC 405

- Card Holders: 10,000 cards
- Traditional & Trusted RFID Access Control Model
- Glossy Black Body
- Transaction Storage :30000
- Sleek Design



ID T4 BIO

- User Capacity:3000
- Fastest Fingerprint Recognition
- Rugged Body Structure
- Transaction Storage :100000
- 600 DPI Scanner
- Most economic Biometric Device in industry



ID T9

- User Capacity:3000
- Lustrous Slim Body
- 500 DPI Scanner
- Transaction Storage :50000
- 2.5" Blue LED Display
- Aesthetic Design



ID X990

- User Capacity:3000
- Amazing Glossy Steel Bottom Finish
- Largest Selling Biometric Device in India
- Transaction Storage :100000
- 3" LED Display
- Incredible 600 DPI Scanner



SF 3000 PFC MI

- User Capacity:2000
- Fastest Fingerprint Algorithm
- Metallic Textured Finish
- Transaction Storage :24000
- Industrial grade Scanner
- Anti-Temper Alarm Feature

APPLICATIONS

Loyalty Application

Gift Card Application

E -Purse Application

Library Automation

Campus Management

Livestock Tracking

Hospital Management

Livestock Tracking

Various other RFID/Smart Card Based Apps.



Loyalty Application

ID Tech offers Loyalty Management tools which help companies grow their revenues by working on retention of their customers and investors. To make this process more user-friendly and end-to-end, our team of consultants works with your team, by being physically present onsite or through technology. Our solutions help integrate business intelligence with our loyalty strategies to reach accurate conclusions.



Gift Card Application

Plastic gift cards have become nothing less than The Next Big Thing during recent holiday seasons. They're convenient, affordable, and appealing to consumers. Gift cards are the perfect choice for any occasion.

ID Tech offers gift cards which can be printed in single to full color on both sides, and can be produced with a barcode or magnetic stripe programmed to work with your point of sale systems (credit card reader) software for tracking, re-loading and storing customer information (which can be pulled up, each time the card is swiped through the system.) Our cards can also be printed with a signature panel or numbering for customer identification purposes.



E -Purse Application

ID Tech offers E-Purse Application which is a onetime investment; simple to setup and which can be used as standalone package. This application can be customised according to your need. With smart cards it is easy to load points (which translate to money) at any time. You can issue cards to unlimited number of people. Plastic graphically enhanced smart cards are assumed to be more valuable to customers than cardboard coupons or low value cards.

This application can be used in:-

Store, restaurant, service shop, gift shop, library, bar, University, gym, health club, gaming establishment, coffee shop, book store, car garage, taxi...you name it.



Library Automation

ID Tech offers RFID based Library Management System (LMS) which facilitates the fast issuing, reissuing and returning of books with the help of RFID enabled modules. It directly provides the book information and library member information to the library management system without any need of manual typing.

It also provides monitoring and searching system.

The monitoring module will continuously monitor the movement of books across the gates, so that the books taken out without prior issuing will be traced out easily and will alarm the librarians.

The searching module provides the fast searching of books using RFID handheld reader. It will also help in Accounting/Stock verification of the materials.



Campus Managemet

Education in India is making an attempt to meet global standards with holistic education and a secure environment conducive to students and faculty is of prime importance.

A complete enhancement of functions and processes can be achieved through automation technologies for better management and security. RFID based solutions like Campus Management, Library Management; Time Attendance Systems find a perfect fit in these scenarios.

ID Tech with its expertise in the field of automation and pool of experience has developed solutions which integrate the various processes within a campus and build them on a single platform, making it easier and hassle free for people to use.

Wholesome Campus Management System includes:-

- A. Time Attendance & Access Control System.
- B. Library Management System.
- C. Canteen E-Purse Management System.
- D. RFID based School Bus Tracking System.



Livestock Tracking

One of the earliest applications of RFID has been in animal tracking. Since livestock assets are constantly on the move, traditional methods of identification and data collection have proven quite inefficient, especially in the case of large herds. RFID overcomes the shortcomings of manual tracking by being fast and accurate without requiring a visual or line of sight reading. Since radio signals harmlessly penetrate body tissue and most other materials, RFID tags can be safely attached or even implanted inside livestock and will last for the entire lifetime of the animal. Using a unique numbered RFID tag provides a very efficient method of identifying animals and collecting data far more quickly. Each unique RFID tag can be linked to a database that includes that animal's specific information such as date of birth, inoculations, breeding specifics such as blood relation, and more.



Hospital Management

High Frequency RFID Solution System from ID Tech enables healthcare providers to reliably track hospital supplies, medical equipment and patients' records. Our hospital management system includes RFID tags and readers for instant deployment. The RFID solution kit improves patient safety and hospital efficiency by automated data capture.

The RFID patient tracking kit contains passive RFID wristbands, a PDA handheld reader, a desktop HF reader and necessary software. Doctors and Medical staff can immediately identify a patient and the medical record with a PDA Handheld reader and update current information to the system.

With non-allergenic silicon and waterproof design, the one-time using RFID wristband is suitable for hospital patient management such as patient monitoring, medication record and newborns tracing in hospital settings. Desktop HF reader and PDA Handheld reader are used for wristband information collection and transfer.



Inventory Management

The more information you have about your inventory, the fewer inventories you need to have. ID Tech has bar code and RFID labelling solutions which can be used to accurately identify inventory throughout your storage, handling, and distribution processes. Whether you want simple serial numbers or advanced identification solutions to provide customer, configuration, and traceability data, ID Tech has printer, label, bar code, RFID and software solutions to bring accuracy and visibility to your inventory control operations.

We start with printing and applying labels right at the receiving and processing areas with wireless, mobile, and cart-mounted printers to eliminate mistakes and unidentified items. Inventory Management System prevent shipping errors by matching inventory ID labels with packing lists.

We help in tracking and protecting inventory efficiently with RFID solutions.



Various other RFID/Smart Card Based Applications are as follows

- | | |
|-------------------------------|------------------------------|
| A. RFID for Access Control | H. RFID for Parking Control |
| B. RFID for Construction | I. RFID for People Tracking |
| C. RFID for Data Centres | J. RFID for Retail |
| D. RFID for Event Management | K. RFID for Supply Chain |
| E. RFID for Field Service | L. RFID for Utilities |
| F. RFID for Fleet Maintenance | M. RFID for Waste Management |
| G. RFID for Manufacturing | |

SOME OF OUR SATISFIED CLIENTS



ID TECH
IDENTITY AND SECURITY

ID TECH SOLUTIONS PVT. LTD

107A, Humayunpur, Behind NCC, Safdarjung Enclave, New Delhi -110029

Ph: 91-11-41650260, 91-11-26186361

Website: www.idsolutionsindia.com

Email: info@idsolutionsindia.com